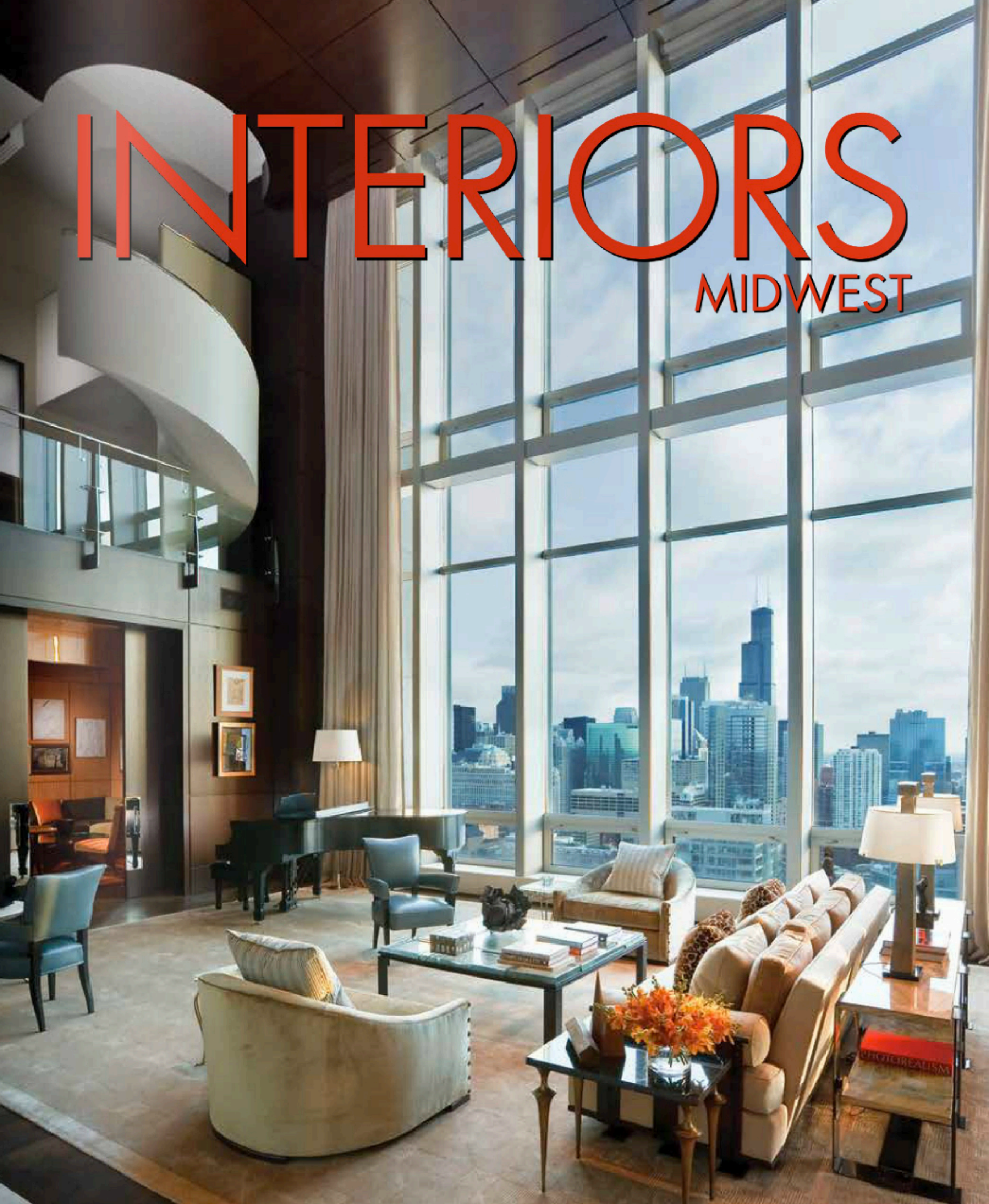


# INTERIORS

## MIDWEST



LEADING DESIGNERS REVEAL THEIR MOST BRILLIANT SPACES



## Lara Prince Designs



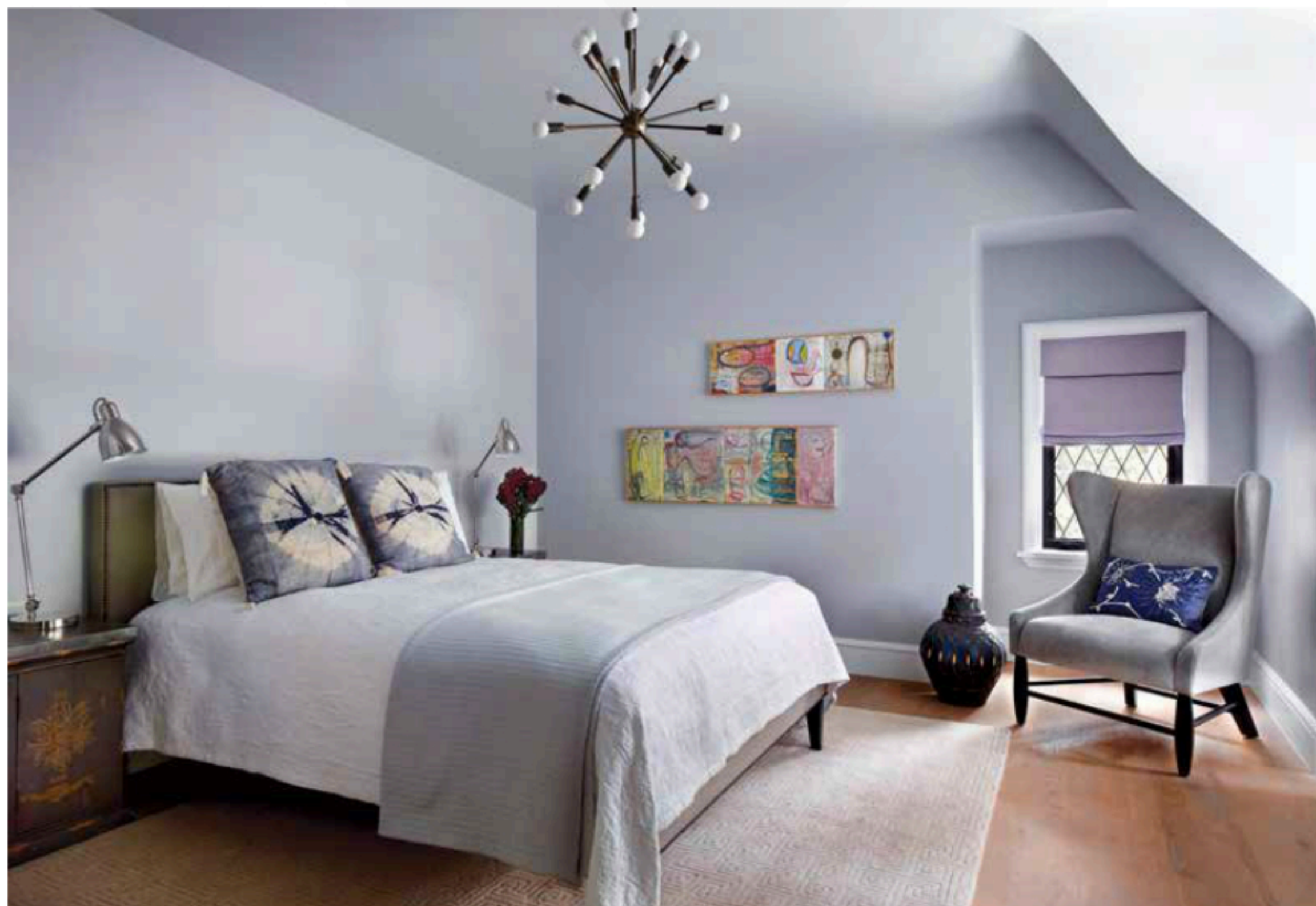
A home should be a fun, comfortable haven for all family members, reflecting their unique character and lifestyle. That is what designer Lara Prince achieves; her spaces foster creativity and expression while standing up to the everyday lifestyles of active homeowners. Inspired by her lifelong passion for good design, Lara left her career in the financial world for fashion before she decided to pursue her degree in interior design. In 1999, Lara struck out on her own and founded Lara Prince Designs, Inc., a firm that's all about originality and style. Initially hailing from Manhattan, Lara creates works that are edgy, inspired by rock and roll, and utterly luxurious while still making sense for the modern homeowner. She knows what it means for pieces to be family friendly, and she artfully combines durable designs with high-end elements to transform a space from ordinary to downtown chic.

Above & Facing Page: When I got my hands on the house, it was so “vanilla.” There was no depth, texture, or character, but I loved its great architectural features. Beautiful angles, archways, mouldings, and coffered ceilings were some of the existing bones I was excited to work with. Thinking outside the box by combining sexy wallpaper, unusual found objects, and mid-century furnishings gives a room a soul. Thoughtful design is not an arrangement of coordinating furniture, fixtures, and textiles, but rather a vignette of hand-picked pieces that have an integrity to stand out on their own yet somehow come together to create an atmosphere that livens the senses and emotions.

*Photographs by Tony Soluri*







Above: I fell in love with the wallpaper years before it dressed up the dining room; it really gives a funky contemporary twist to a very traditional setting. The dining table is a work of art in itself; charred throughout, the surface is then distressed with a chainsaw and treated so that it's nearly indestructible. I hung a chandelier made of strips of bone and crowned with a horsehair shade over the table. High-end pieces like the fixture and table can be easily paired with ready-made elements. The reproduction chairs look just as luxurious as the table they surround.

Right: An antique English sideboard—goldleafed and adorned with graffiti-style lyrics from John Lennon's "Imagine" and "Give Peace a Chance"—draws guests inside as soon as they step into the entryway. I love the juxtaposition of the piece with the mid-century chandelier above. They are from entirely different eras and stylistically worlds apart, but they work beautifully together. Quite often wallpaper makes a big enough impact that art becomes less urgent to adorn a space. Sometimes an interesting and dynamic piece like the sculptural mirror above the sideboard is a nice alternative to a painting.

Facing Page: Rugs do so much for a room; they can bring a scheme together and warm up a hardwood floor. Purple tones—sometimes more plum, other times with a blue undertone—are evident throughout the home. Mid-century décor, from shelf solutions to art and light fixtures, makes for a playful tone and is combined with natural elements to create a warm and casual tone.

*Photographs by Tony Soluri*







"Stunning work presented in a single collection makes *Interiors Midwest* a treasure difficult to replicate. Rich, cutting-edge, yet classic talent unfolds on every page, bringing our beloved metropolitan Midwest to life." *Jessica Lagrange*

"Through beautiful photos and descriptive narrative, this book provides an insider's glimpse into the philosophies and talent of the Midwest's finest designers." *Lara Prince*

"Whether it's a traditional or contemporary concept—or something in between—the designs in this book define the excellence and artistry of some of the nation's most prestigious designers and architects." *Cindy Bardes Galvin*

**PANACHE**  
PANACHE PARTNERS

Creating Spectacular Publications for Discerning Readers  
www.panache.com

Interiors Midwest  
ISBN - 13: 978-0-9886140-0-0  
ISBN - 10: 988614006

ISBN: 978-0-9886140-0-0

